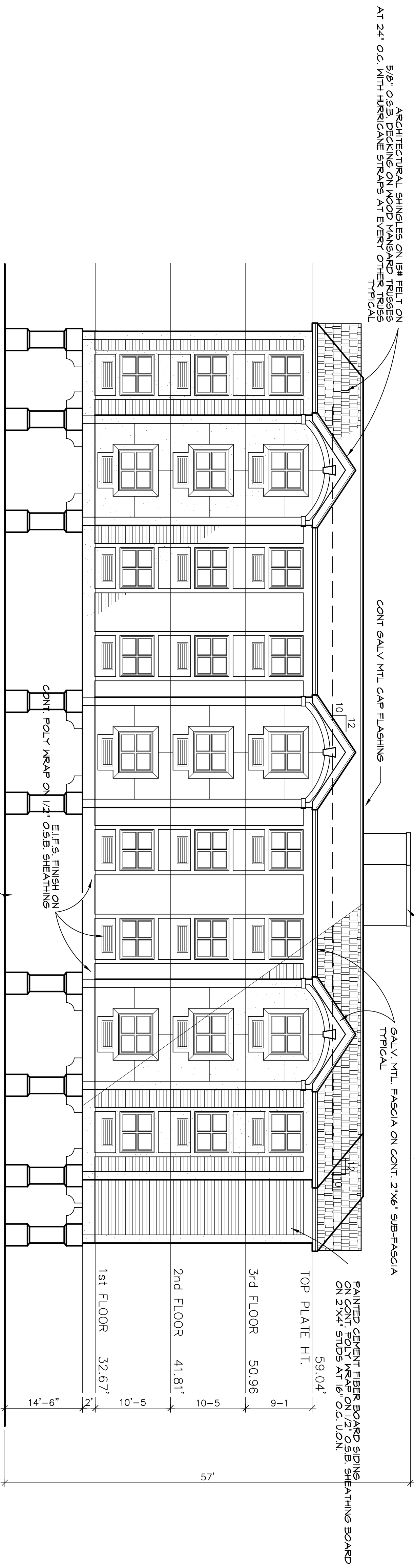


**COMPOSITE FLOOR PLAN**



**SIDE (SOUTH) ELEVATION -**

SCALE: 1/8"=1'-0"

**HOPKINS & ASSOCIATES ARCHITECTS**  
 457 ALICIA DRIVE | BILLOU, MS 39201 | 228-697-8999

PROJECT: PROPOSED CONDOMINIUM  
 36 UNITS

SHEET TITLE: FLOOR PLAN & ELEVATION

PROJECT NO: XX-XX  
 DRAWN BY: GJM  
 DATE: 7/17/06

REVIEWED BY: JAMES HOPKINS  
 1293

MSSSP#1

